

Seamless Self-Flashing Skylights (SSF)

VTECH's Patented Seamless Self-Flashing Skylight is a simple install for new skylight applications, and is as durable and leak-resistant as the rest of the roof. No pre-built curb is necessary for the SSF installation. Due to the nature of the aliphatic polyurethane, VTECH's Solid-State Skylights, as opposed to traditional skylights, can be installed with any type of roofing products and materials. Available in standard sizes for both residential or commercial applications, these superior products are backed by an all inclusive, 10 to 20-year transferable warranty, based on the product.

Glass - Standard, Safety or Hurricane Glass (SSF)⁺

20-Year Fall Protection Warranty on Hurricane Glass.



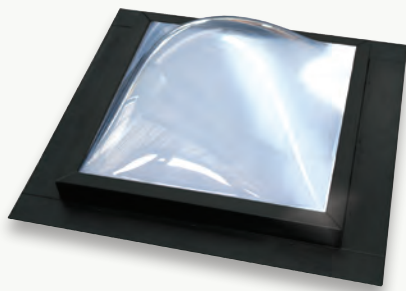
Size Code	Part Number	Product Description	U-Factor Value* with Insulation Board Installed	U-Factor Value without Insulation Board Installed	Solar Heat Gain Coefficient (SHGC)
2x2 SSF	VT2X2SSFSTDG	Standard Glass	0.43**	0.57	0.24
2x4 SSF	VT2X4SSFSTDG		0.43**	0.57	0.24
3x3 SSF	VT3X3SSFSTDG		0.43**	0.57	0.24
2x2 SSF	VT2X2SSFSAFG	Safety Glass	0.42**	0.56	0.24
2x4 SSF	VT2X4SSFSAFG		0.42**	0.56	0.24
3x3 SSF	VT3X3SSFSAFG		0.42**	0.56	0.24
2x2 SSF	VT2X2SSFHURG	Hurricane Glass	0.39**	0.53	0.24
2x4 SSF	VT2X4SSFHURG		0.39**	0.53	0.24
3x3 SSF	VT3X3SSFHURG		0.39**	0.53	0.24

⁺ These products meet the Green Seal™ Standard for Windows, GS-13, for governing energy efficiency, heavy metals in the frame and sash materials, packaging, and consumer education materials.



Acrylic Dome Over Polycarbonate - with Lumira-Aerogel (SSF)

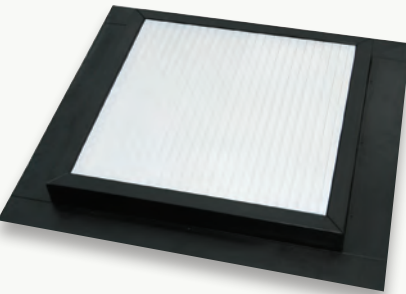
10-Year Fall Protection Warranty.



Size Code	Part Number	Product Description	U-Factor Value* with Insulation Board Installed	U-Factor Value without Insulation Board Installed	Solar Heat Gain Coefficient (SHGC)
2x2 SSF	VT2X2SSFPWNAD	Dome Over Poly with Lumira-Aerogel	0.35*	0.49	0.55
3x3 SSF	VT3X3SSFPWNAD	Dome Over Poly with Lumira-Aerogel	0.35*	0.49	0.55

Polycarbonate - with Lumira-Aerogel (SSF)

10-Year Fall Protection Warranty.



Size Code	Part Number	Product Description	U-Factor Value* with Insulation Board Installed	U-Factor Value without Insulation Board Installed	Solar Heat Gain Coefficient (SHGC)
2x2 SSF	VT2X2SSFPWN	Poly with Lumira-Aerogel	0.35*	0.49	0.50
2x4 SSF	VT2X4SSFPWN	Poly with Lumira-Aerogel	0.35*	0.49	0.50
3x3 SSF	VT3X3SSFPWN	Poly with Lumira-Aerogel	0.35*	0.49	0.50

***In order to achieve the U-values listed above a 3/4" polyisocyanurate/polyurethane based insulation board with a minimum R-value of 4.5 per inch must be installed (not supplied with unit).**

